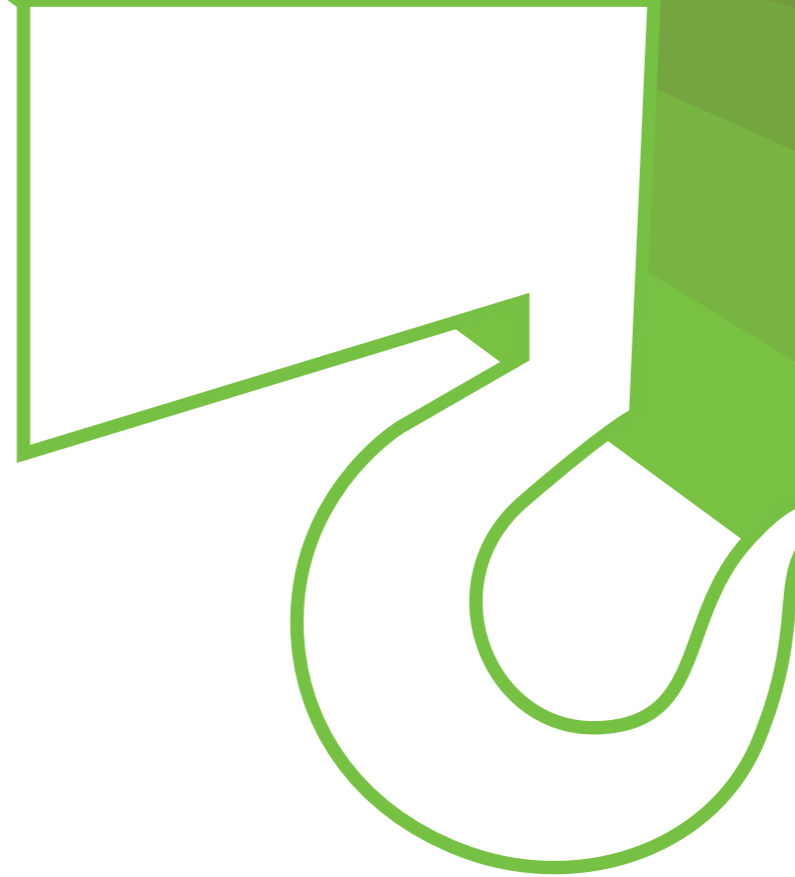


Data subject to change without prior notice  
Edition 03/2026 © 2026 JMG Cranes S.p.A. All rights reserved  
Rev. 00



# Electric pick & carry cranes



**MC750TC**

(imperial)

Maximum capacity  
**1700 lbs**

## EU standards CE

UNI ISO 4301-1: A1

2006/42 CE-2014/30 UE-2014/35 UE  
2000/14 CE and subsequent amendments.

EN 13000:2014-ANSI/ASME B30.5-2021  
and subsequent amendments.



## JMG Cranes S.p.A.

**Offices and plant:** Via dell'Innovazione, 3 - 29010 Sarmato (PC) - Italy

**Registered Office:** Via Dante, 15 - 26100 Cremona - Italy

**Administration:** Via Bergamo, 142 - 26100 Cremona - Italy

+39 0523 8486

info@jmgcranes.com

www.jmgcranes.com

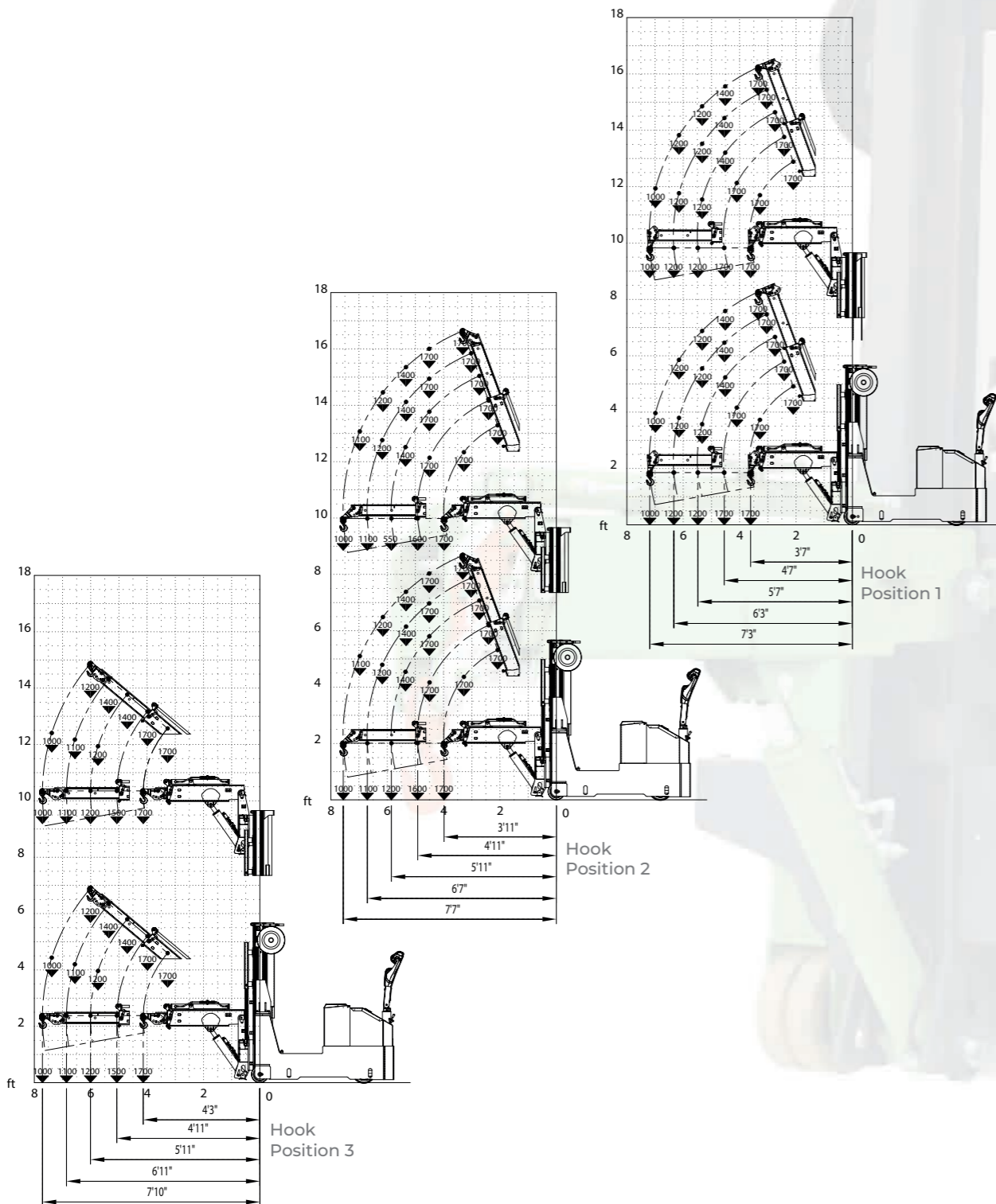




## Features

- Full free lift mast
- Steering and traction: servo-assisted steering standard
- Alternating current (AC) traction motors
- Counter-balanced system without baselegs
- 3 position tiltable head (0°/45°/90°)
- Long lasting battery: 24V armored batteries with a capacity of 270 Ah

## Load charts



## Technical features

Retracted boom horizontal	1700 lbs
Dimensions ft	8'-5" x 2'-11" x 5'-8"
Total weight	5000 lbs
L.M.I.	Electronic safe load indicator and tilting moment limiter

## Overall dimensions

