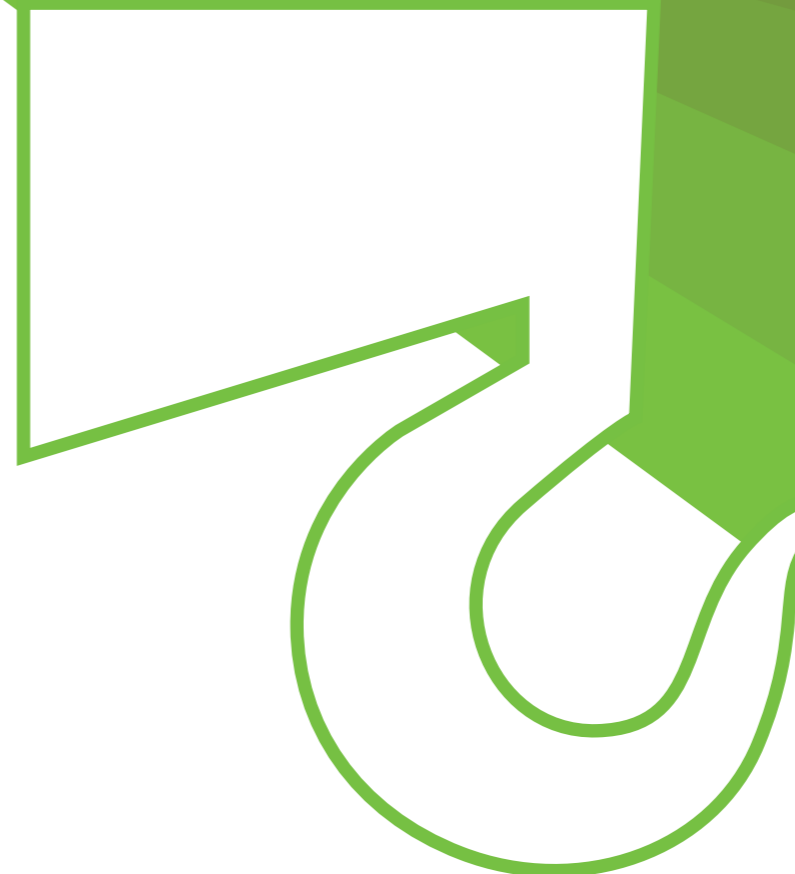


Data subject to change without prior notice
Edition 02/2026 © 2026 JMG Cranes S.p.A. All rights reserved
Rev. 00



Electric pick & carry cranes



MC650S
(metric)
Maximum capacity
65t

EU standards CE

UNI ISO 4301-1: A1
2006/42 CE-2014/30 UE-2014/35 UE
2000/14 CE and subsequent amendments.
EN 13000:2014-ANSI/ASME B30.5-2021
and subsequent amendments.



JMG Cranes S.p.A.

Offices and plant: Via dell'Innovazione, 3 - 29010 Sarmato (PC) - Italy

Registered Office: Via Dante, 15 - 26100 Cremona - Italy

Administration: Via Bergamo, 142 - 26100 Cremona - Italy

+39 0523 8486

info@jmgcranes.com

www.jmgcranes.com





Features

- Radio-controlled electric mobile crane
- Proportional telescopic boom
- Front wheels drive with counter-rotation
- Tilting head 3 positions (0°/+40°/+80°)
- Auto-loading/unloading of counterweights
- 4 removable counterweights

Optional

- Cabin
- Lithium battery
- Hydraulic winch 55t with 10° pull
- Mechanical jib + mechanical extension
- Hydraulic jib + mechanical extension
- Articulated jib + mechanical extensions
- Hydraulic forks

- Removable front stabilizers
- Reduced counterweight (2.200 kg)
- Customer paint colour

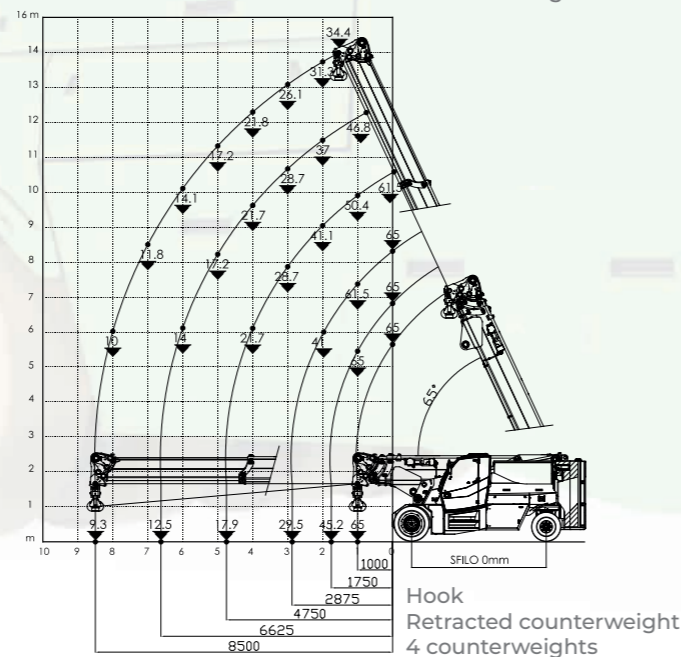
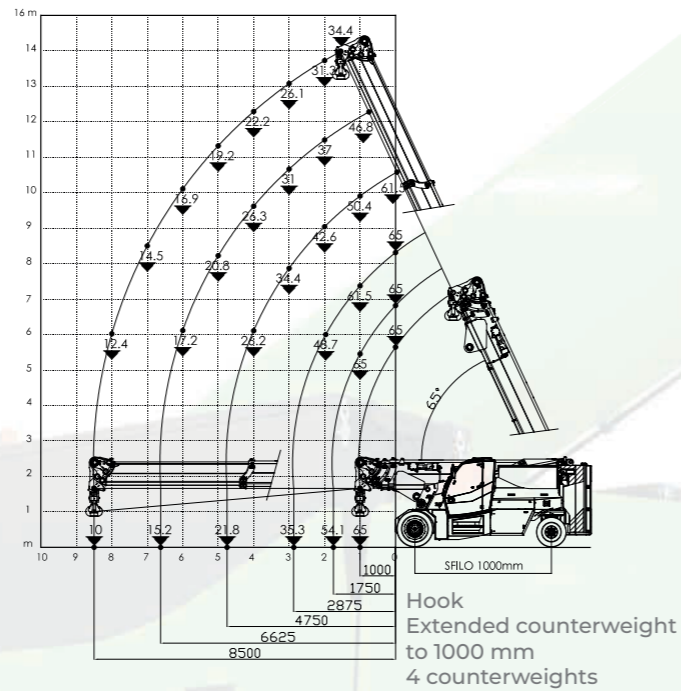
Load charts

(t)	5645	6395	7520	9395	11270	13145
0	65	65	65	61,5	46,8	
0,5	65	65	65	55,4	44,5	
1	65	65	61,5	50,4	40,6	34,4
1,5		61,2	57	46,2	38,8	32,9
1,75		54,1	54,4	44,3	37	31,3
2			48,7	42,6	33,7	28,5
2,5			40,4	39,5	31,7	26,6
2,88			35,3	35,9	31	26,1
3				34,4	31	26,1
3,5				29,9	28,7	24
4				26,2	26,3	22,2
4,5				23,2	23,2	20,6
4,75				21,8	21,9	19,9
5					20,8	19,2
5,5					18,9	18
6					17,2	16,9
6,5					15,7	15,7
6,63					15,2	15,4
7						14,5
7,5						13,4
8						12,4
8,5						10

N. MAX ROPE 10
55 t

SINGLE ROPE 1
5,5 t

(t)	5645	6395	7520	9395	11270	13145
0	65	65	65	61,5	46,8	
0,5	65	65	65	55,4	44,5	
1	65	65	61,5	50,4	40,6	34,4
1,5		65	57	46,2	38,8	32,9
1,75		59,8	55	44,3	37	31,3
2			49,2	42,6	33,7	28,5
2,5			35,4	36,6	31,7	26,6
2,88			28,9	29,8	30,1	26,6
3				28,2	28,2	26,1
3,5				22,8	22,8	22,8
4				18,9	19	19
4,5				15,9	16,1	16,2
4,75				14,7	14,9	15
5					14	14
5,5					12,2	12,2
6					10,7	10,8
6,5					9,5	9,6
6,63					9,1	9,4
7						8,6
7,5						7,7
8						6,9
8,5						6,2



Technical features

Maximum capacity

65t

Dimensions mm

5.520x2.350x2.500

Front wheels drive
nr.2 electric motors 16kW 96V AC

Total kg 45.000
nr.4 removable counterweights
kg 17.500 (kg 6.700+kg 1.350x3pz
+kg 1.350x3pz+kg 1.350x2pz)

Armoured plate battery 96V 1.550Ah

nr.2 front cushion 40x20x30"
+ nr.2 cushion 10x12x30"
nr.4 rear cushion 355/50-20"

Rear steering
Steering angle -90°/+90°

L.M.I. Electronic safe load indicator
and tilting moment limiter

Automatic braking system

Fabricated from preformed and
welded quality steel plate

Inclination angle +65°/-5°

nr.2 electric motors
35kW 96V AC

Overall dimensions

