

Data subject to change without prior notice  
Edition 10/2022 © 2022 JMG Cranes S.p.A. All rights reserved  
Rev. 2 - 10/22



# ELECTRIC PICK & CARRY CRANES

## LIGE by JMG Cranes S.p.A.

Sales & Service Office

Via Bergamo, 142

26100 Cremona - Italy

t +39 0372 1786738

Production Plant

Via Zuccherificio 2

29010 Sarmato (PC) - Italy

t +39 0523 8486

e info@jmgcranes.com



[www.jmgcranes.com](http://www.jmgcranes.com)



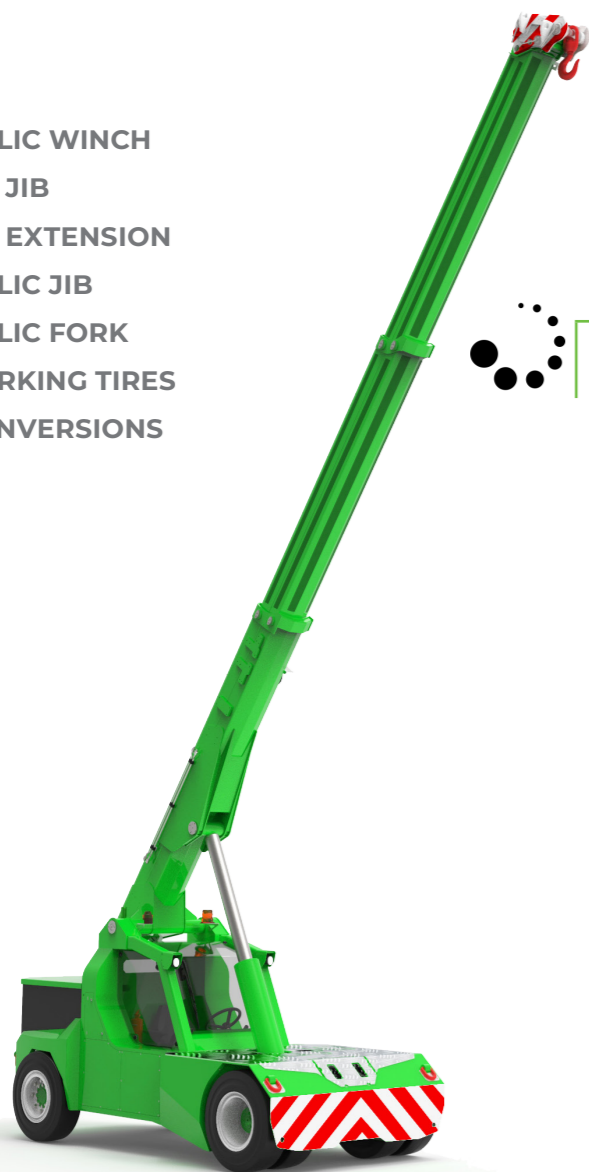
**L120 (metric)**  
Max Capacity 12.000 kg

**LIGE**  
SINCE 1945 by JMG

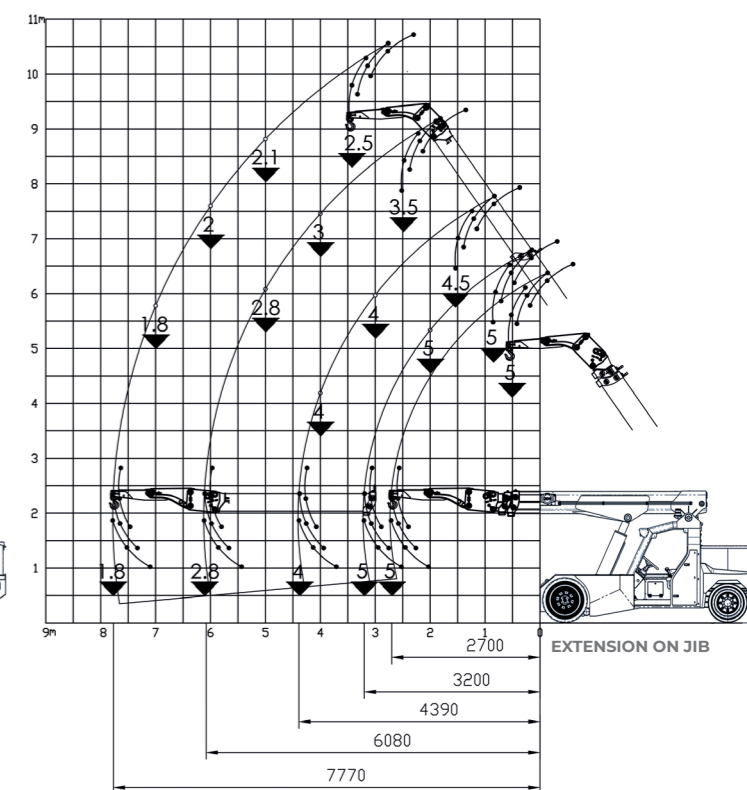
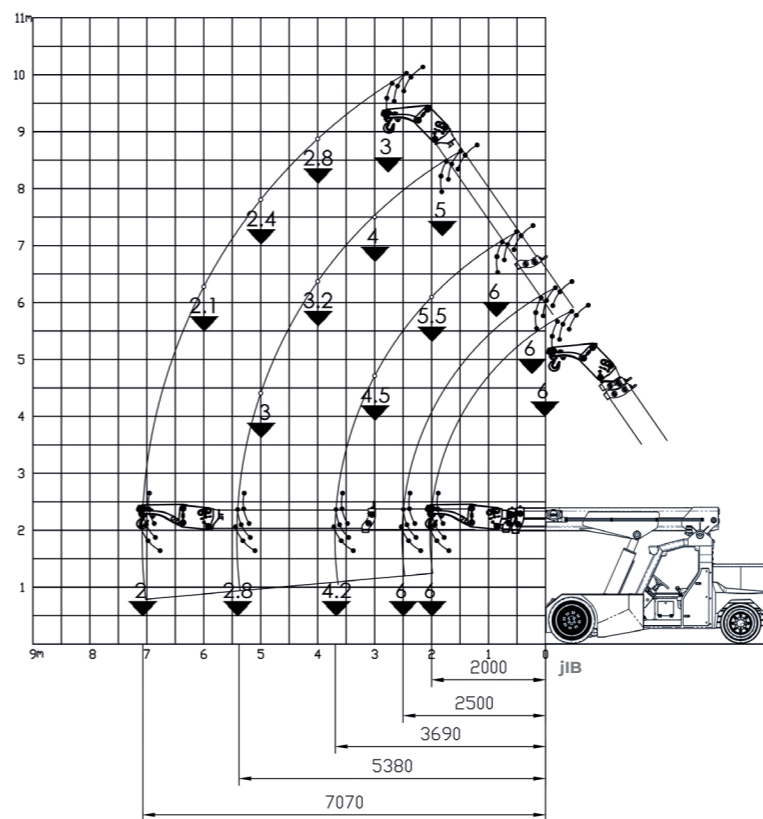
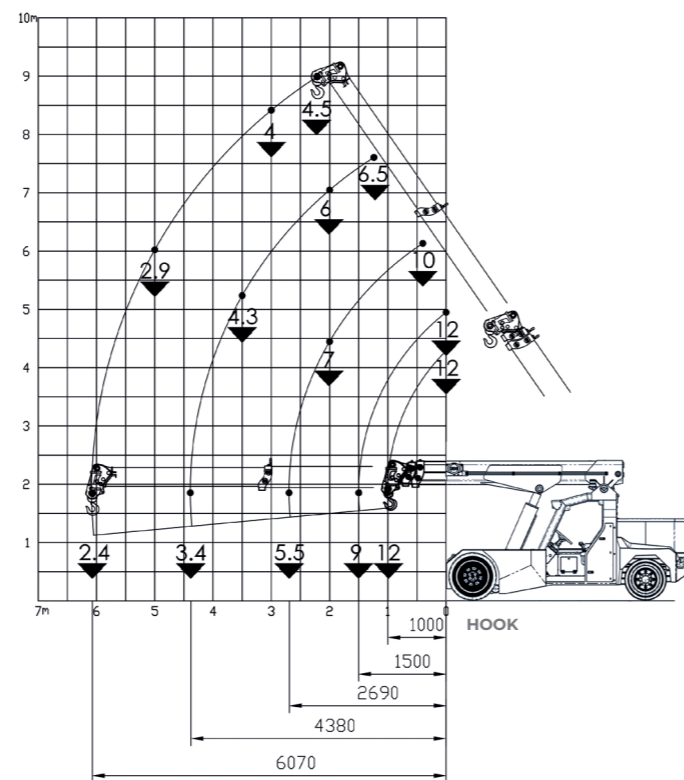
WIDE AND ERGONOMIC CABIN  
 FRONT WHEELS DRIVE WITH COUNTER ROTATION  
 COMPACTNESS AND AGILITY  
 REAR STEERING

### Optionals:

- HYDRAULIC WINCH
- MANUAL JIB
- MANUAL EXTENSION
- HYDRAULIC JIB
- HYDRAULIC FORK
- NON-MARKING TIRES
- ATEX CONVERSIONS



### Load charts



### i

### Technical features

Max Capacity kg	12,000
Dimensions mm	4155x1950x2408

Front-wheels drive. N°2 electric motors AC 8.5 kW 80V. Insulation class H	<b>L.M.I.</b> Electronic safe load indicator and tilting moment limiter
Total Kg. 12.600	Service brake: hydraulic with foot control. Parking and emergency brake: hydraulic with automatic control.
80 V - 900 Ah 8 working hours	Self-supporting steel structure bent and welded
Front nr. 4 superelastic 4x300-15" Rear nr. 2 superelastic 250x15/15"	+55°/-12°
Rear Steering angle -90°/+90°	Motor driven pump 1x20kW - 80 V AC, Insulation class H

### EU Standards CE

	UNI ISO 4301-1: A1
	2006/42 CE-2014/30 UE-2014/35 UE- 2000/14 and subsequent modifications
	EN 13000:2014 ANSI/ASME B30.5-2011 and subsequent modifications

### Dimensions

